

# San Francisquito Trails

## Legend



Trail Head

### Multi-use Trails Rating



Gentle



Moderate



Parking



Santa Clara River

## Trail Etiquette



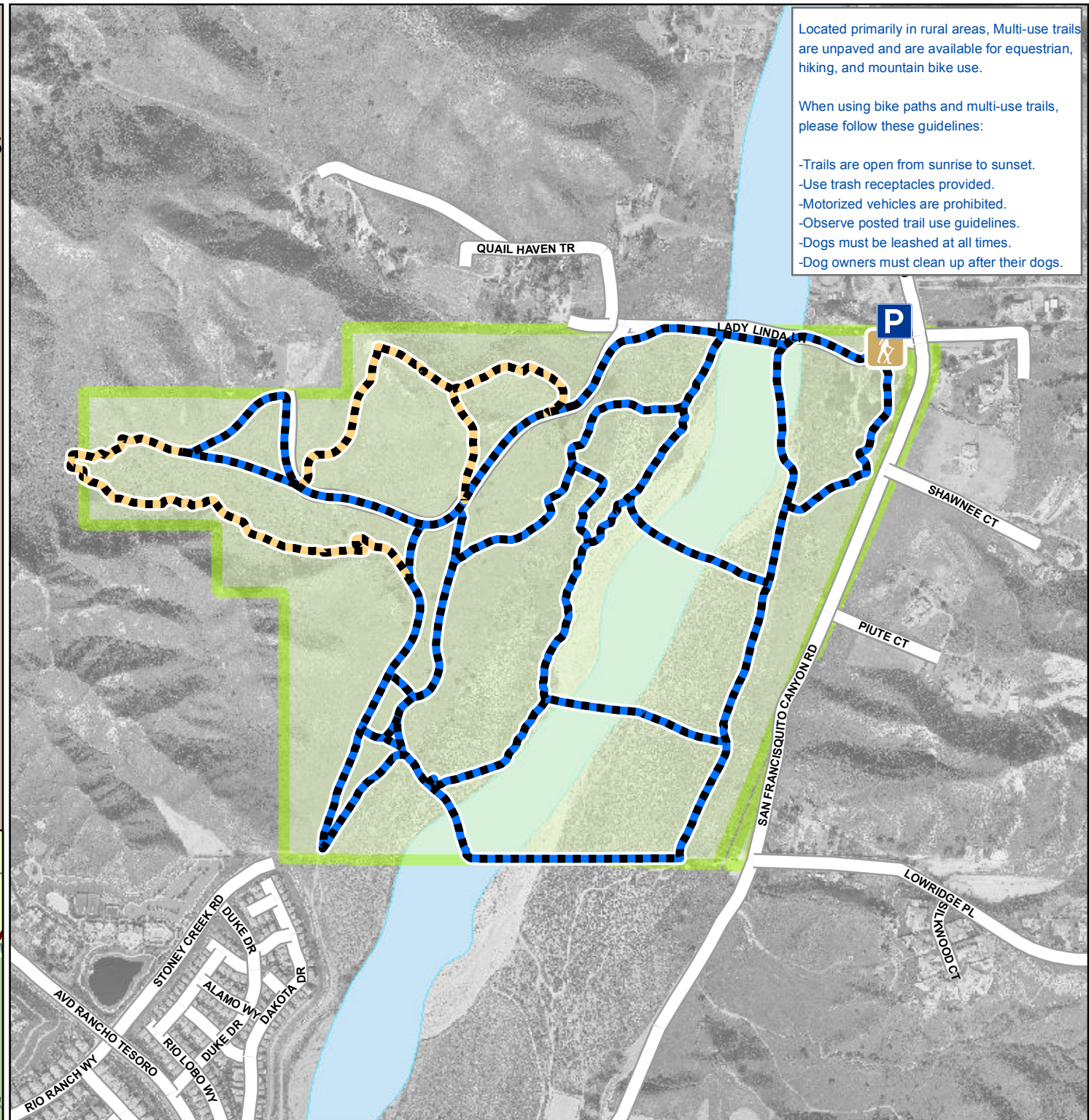
For more information, please visit our website at <http://hikesantaclarita.com>

The City of Santa Clarita does not warrant the accuracy of the data and assumes no liability for any errors or omissions.



360 180 0 360 Feet

## Map Locator



Located primarily in rural areas, Multi-use trails are unpaved and are available for equestrian, hiking, and mountain bike use.

When using bike paths and multi-use trails, please follow these guidelines:

- Trails are open from sunrise to sunset.
- Use trash receptacles provided.
- Motorized vehicles are prohibited.
- Observe posted trail use guidelines.
- Dogs must be leashed at all times.
- Dog owners must clean up after their dogs.