

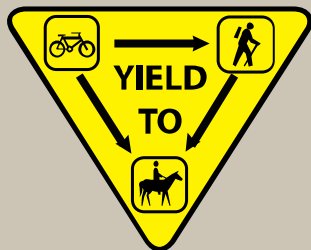


Haskell Canyon Trails

Legend

- Archery Range
 - Gentle
 - Moderate
 - Steep
 - Parking
 - Trail Head
- Multi-use Trails Rating**

Trail Etiquette



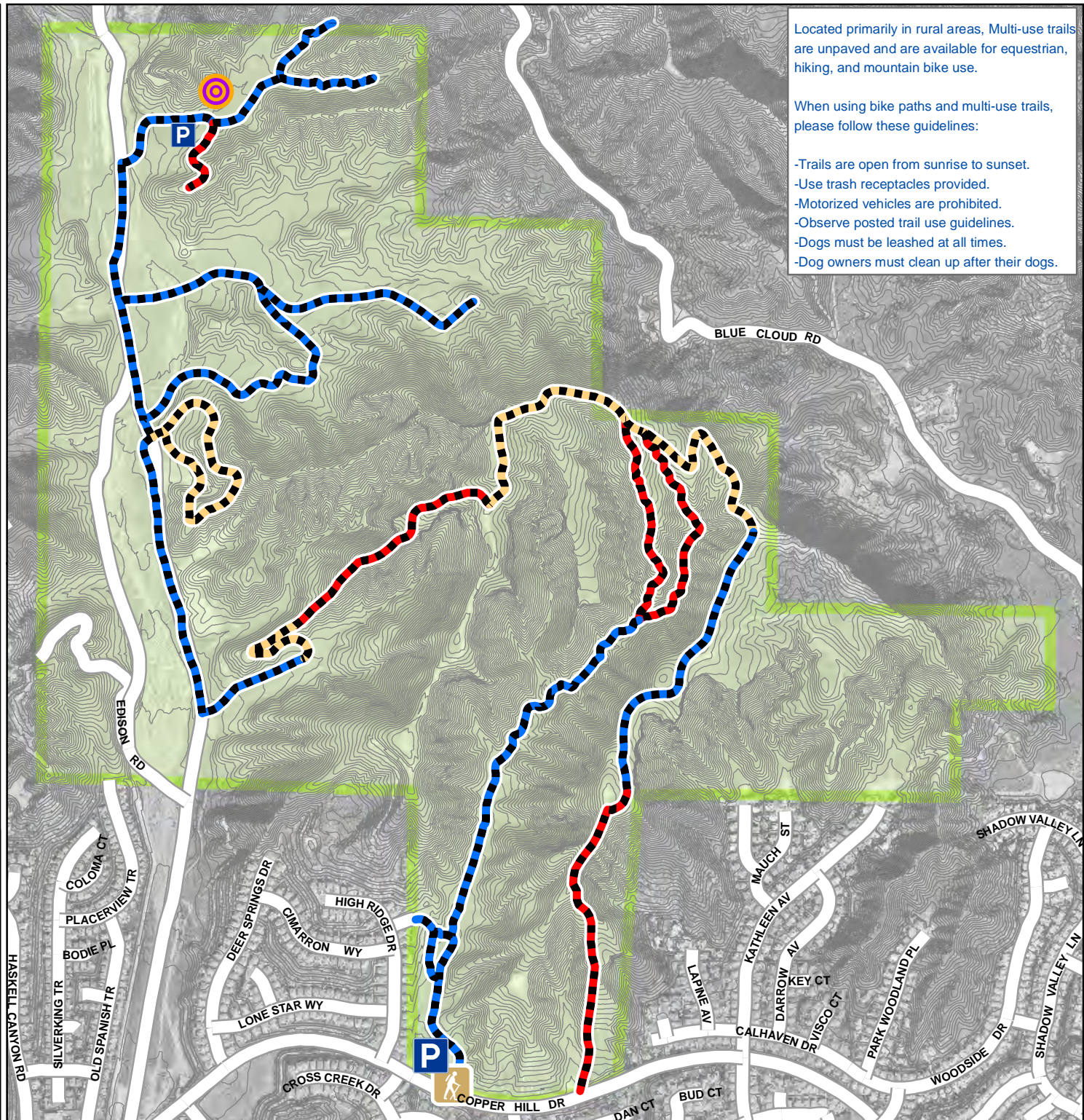
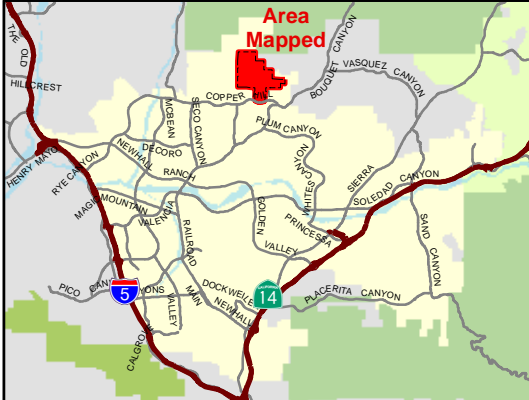
For more information, please visit our website at <http://hikesantaclarita.com>

The City of Santa Clarita does not warrant the accuracy of the data and assumes no liability for any errors or omissions.



400 200 0 400 Feet

Map Locator



Located primarily in rural areas, Multi-use trails are unpaved and are available for equestrian, hiking, and mountain bike use.

When using bike paths and multi-use trails, please follow these guidelines:

- Trails are open from sunrise to sunset.
- Use trash receptacles provided.
- Motorized vehicles are prohibited.
- Observe posted trail use guidelines.
- Dogs must be leashed at all times.
- Dog owners must clean up after their dogs.